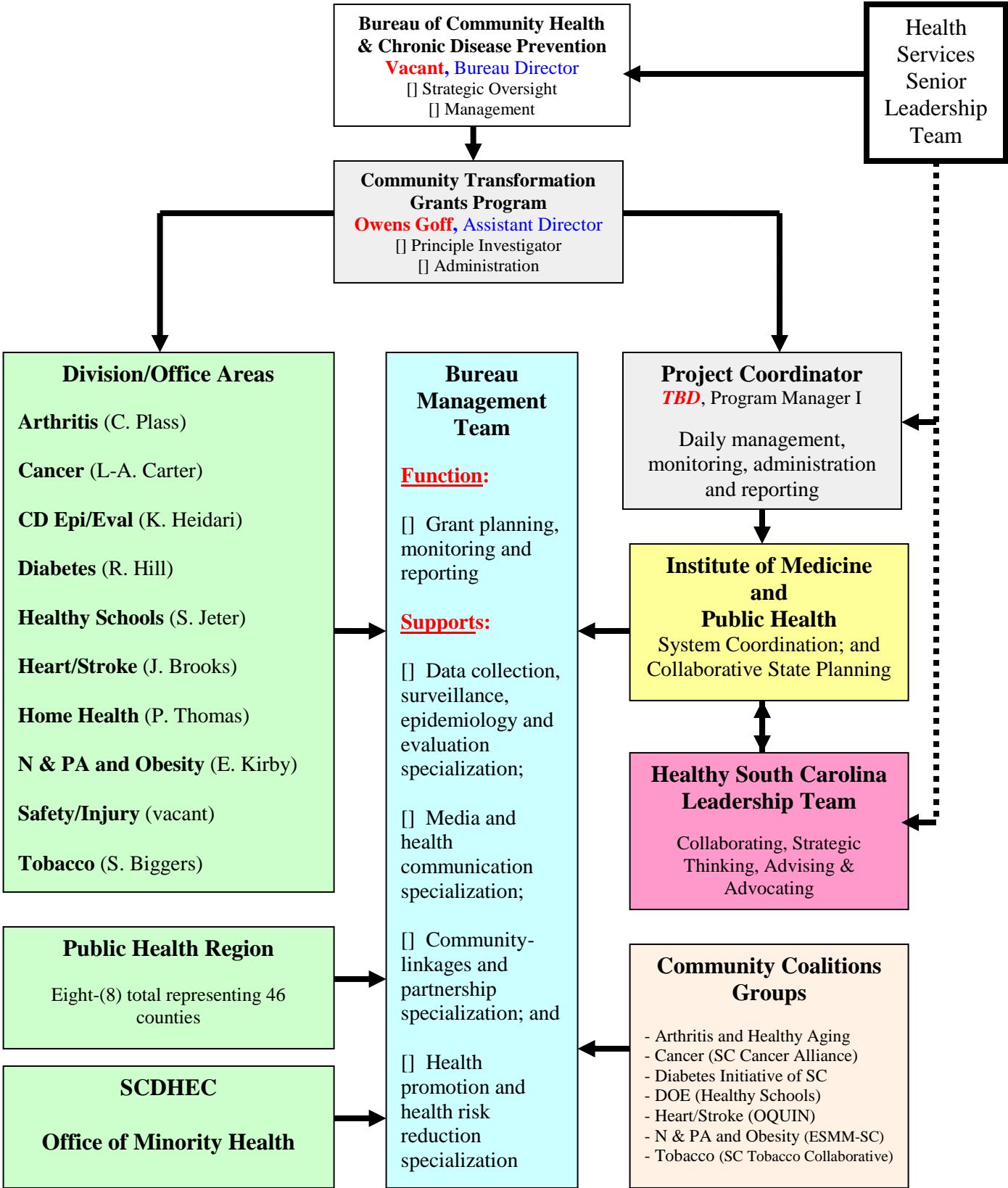


Appendix II
Initiative Documentation

Healthy South Carolina Initiative Logic Model

Inputs	Activities		Outcomes		
	Year 1	Years 1-2	Short (Years 2-3)	Medium (Years 3-5)	Long (Years 5+)
<p>DHEC Staff:</p> <ul style="list-style-type: none"> Project Director, Evaluator, & Admin Coordinator Bureau Staff Central Office Staff Regional Staff <p>Partners:</p> <ul style="list-style-type: none"> ESMMSC SCTC OQUIN Local coalitions Providers Leadership Team Members Consultants <p>Resources:</p> <ul style="list-style-type: none"> CTG funding In-kind contributions Community Transformation Plan Sustainability Plan Fiscal Management system Evaluation Plan Performance Mgt System SCORES 	<p>Form & Maintain Leadership Team</p> <p>Establish Program Infrastructure</p> <ul style="list-style-type: none"> Develop Program Infrastructure Maintain staffing requirements Engage partners & communities <p>Implement Community Transformation Plans</p> <ul style="list-style-type: none"> Implement PEPI interventions Monitor & document impact <p>Participate in Programmatic Support Activities</p> <ul style="list-style-type: none"> Attend CDC & CTG National Network meetings & trainings Disseminate lessons learned <p>Engage in evaluation activities</p> <ul style="list-style-type: none"> Implement evaluation plan Participate in national evaluation efforts 	<p>Active and Effective Coalition</p> <p>Competent and sufficient staff functioning within established roles and processes</p> <p>Implementation of interventions, focused on disparate populations, in the areas of:</p> <ul style="list-style-type: none"> Tobacco free living Active living and healthy eating High impact quality clinical preventive services <p>Integration across objectives within the CTP</p> <p>Skilled staff and partners to implement and evaluate initiative and interventions</p> <p>Comprehensive evaluation of intervention activities and outcomes</p>	<ul style="list-style-type: none"> List of Policy Priorities <p>Increased # of PEPI changes as described in Measures from CTIPs, Appendix Ds</p>	<ul style="list-style-type: none"> State Health Improvement Plan <p>Outcome Objectives from each CTIPs, Appendix Ds</p>	<p>By 9/ 30/ 2016, SC will:</p> <p>1b.) reduce the # of people with a smoking attributable disease from 119,800 to 113,810.</p> <p>2a.) reduce the obesity rate among the adult population (18 and older) from 30.3% to 28.8% and among youth (high school) from 16.7% to 15.9%.</p> <p>3a.) reduce the heart disease mortality rate from 366.2 per 100,000 among those 35 and older to 347.9.</p> <p>3b.) reduce heart disease morbidity rate from 3022.3 per 100,000 among those 35 and older to 2871.2.</p> <p>3c.) reduce the stroke mortality rate 97.9 per 100,000 among those 35 and older to 93.0.</p> <p>3d.) reduce the stroke morbidity rate from 742.1 per 100,000 among those 35 and older to 705.0.</p>

CONCEPTUAL MODEL



Bureau of Community Health & Chronic Disease Prevention
Vacant, Bureau Director
 [] Strategic Oversight
 [] Management

Health Services Senior Leadership Team

Community Transformation Grants Program
Owens Goff, Assistant Director
 [] Principle Investigator
 [] Administration

Division/Office Areas
 Arthritis (C. Plass)
 Cancer (L-A. Carter)
 CD Epi/Eval (K. Heidari)
 Diabetes (R. Hill)
 Healthy Schools (S. Jeter)
 Heart/Stroke (J. Brooks)
 Home Health (P. Thomas)
 N & PA and Obesity (E. Kirby)
 Safety/Injury (vacant)
 Tobacco (S. Biggers)

Bureau Management Team
Function:
 [] Grant planning, monitoring and reporting
Supports:
 [] Data collection, surveillance, epidemiology and evaluation specialization;
 [] Media and health communication specialization;
 [] Community-linkages and partnership specialization; and
 [] Health promotion and health risk reduction specialization

Project Coordinator
TBD, Program Manager I
 Daily management, monitoring, administration and reporting

Institute of Medicine and Public Health
 System Coordination; and Collaborative State Planning

Healthy South Carolina Leadership Team
 Collaborating, Strategic Thinking, Advising & Advocating

Public Health Region
 Eight-(8) total representing 46 counties

SCDHEC
Office of Minority Health

Community Coalitions Groups
 - Arthritis and Healthy Aging
 - Cancer (SC Cancer Alliance)
 - Diabetes Initiative of SC
 - DOE (Healthy Schools)
 - Heart/Stroke (OQUIN)
 - N & PA and Obesity (ESMM-SC)
 - Tobacco (SC Tobacco Collaborative)

Healthy South Carolina Initiative Leadership Team

<p>C. Earl Hunter Commissioner Department of Health and Environmental Control</p>	<p>Jim Headley Executive Director SC Recreation and Parks Association</p>
<p>Rick Foster, MD Senior Vice President, Quality and Patient Safety SC Hospital Association</p>	<p>Donita Todd General Manager WIS TV</p>
<p>Saundra Glover, MBA, PhD USC, Director, Associate Dean for Health Disparities and Social Justice, and Associate Professor, Health Services Policy and Management, Institute for Partnerships to Eliminate Health Disparities</p>	<p>Beth Crocker, JD General Council and Director of Legal Affairs Department of Agriculture</p>
<p>Dr. Greg Hand, PhD Assistant Dean for Research and Practice, Professor Director, Neurobiology and Behavior Laboratory Co-Director, Clinical Exercise Program, USC Arnold School of Public Health</p>	<p>Otis Rawl President and CEO SC Chamber of Commerce</p>
<p>Brent Egan, MD Senior Medical Director, MUSC, Outpatient Quality Improvement Network</p>	<p>Jay Moskowitz, MD President and CEO, Health Sciences SC Endowed Chair, Translational Clinical Research, Center for Healthcare Quality</p>
<p>Todd Bedenbaugh Director of Health and Nutrition SC Department of Education Office of Health and Nutrition</p>	<p>Ernie Bell, PhD Regional Health Director, SC DHEC Region 3 Public Health Office</p>
<p>Crystal Strong Nutrition/Health & Wellness Manager, Lt. Governor's Office on Aging</p>	<p>Graham Adams, PhD CEO SC Office of Rural Health</p>
<p>Lathran Woodard CEO, SC Primary Health Care Association</p>	<p>Lee Pearson, MS, DrPH Director SC Public Health Institute</p>
<p>Myriam Torres, PhD Director, USC Consortium for Latino Immigration Studies</p>	<p>Louis Eubank Executive Director SC Tobacco Collaborative</p>
<p>Laura Long, MD Vice President of Clinical Quality and Health Management, Blue Cross/Blue Shield of SC</p>	<p>Amy Splittgerber Executive Director Eat Smart Move More SC</p>

Position Description: Healthy SC Initiative

Position:

Program Manager I

Nature of Work

- under general supervision, the staff member assigned to this position will carry-out the duties and responsibilities related to effective and efficient implementation of the Federal - Prevention and public Health Funds Coordinated Chronic Disease Prevention and Health Promotion Program.

Minimum Requirements:

- a bachelor's degree and 8-years relevant work experience in the field of healthy community development with 4-years of focus on chronic disease prevention in public health settings.

Knowledge, Skills and Abilities:

- knowledge of CDC's Guide to Community Preventive Services and the Guide to Clinical Preventive Services
- knowledge of DHEC's organizational structure, the individuals assigned with in central office and the region to implement and manage community health and chronic disease prevention initiatives
- skills in interpersonal relations development and effectively operating in a team environment
- skills associated with the effective implementation of population focused evidence-based environmental, policy and systems change strategies at both the state and community level
- ability to manage work, and mobilize co-workers
- ability to interpret and apply policies, regulations and rules, and provide guidance
- ability to make presentations and prepare reports

Example Duties/Responsibilities:

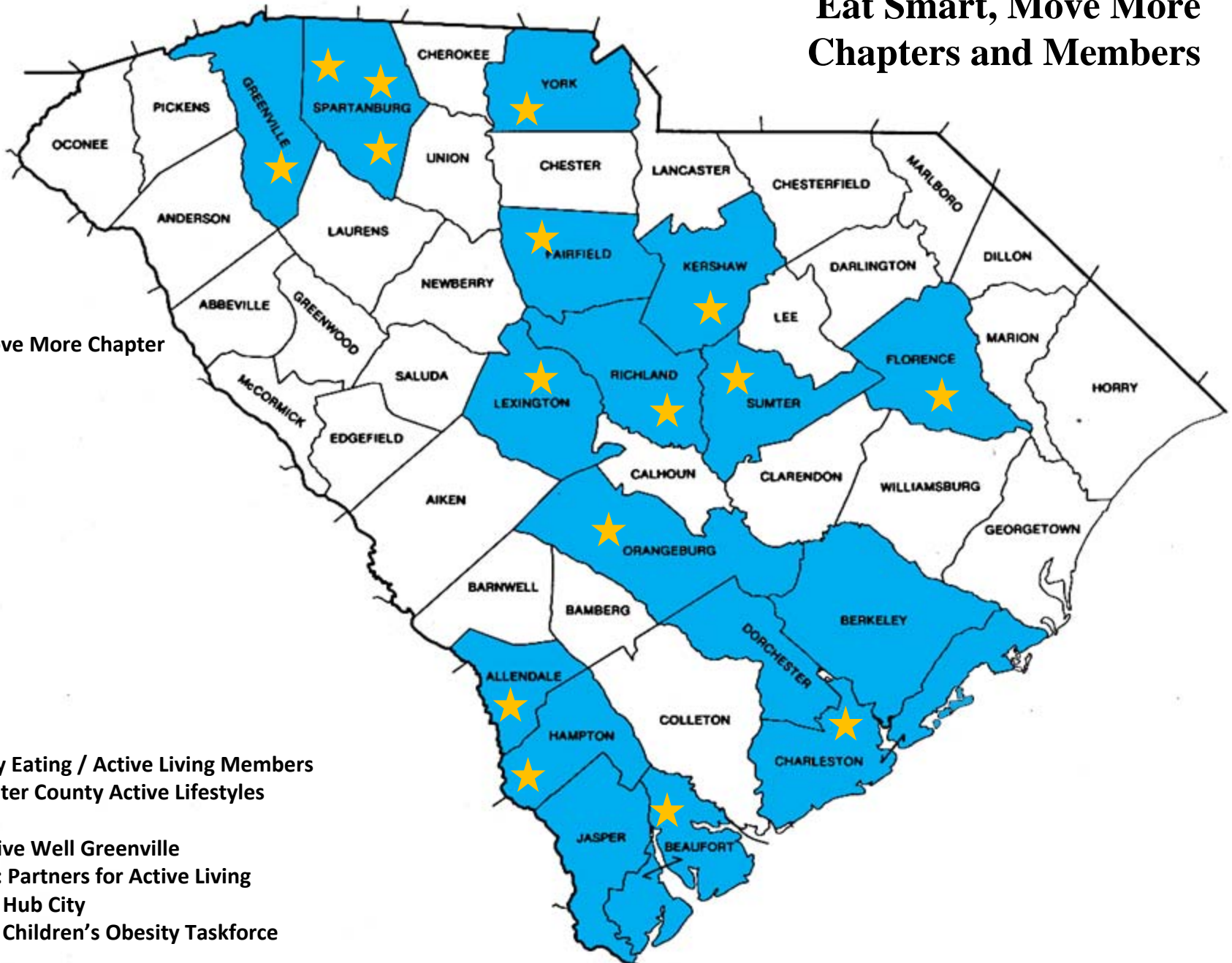
- works with program contractor to engage the members of the BCHCDP's Management Team, and public health region and partner organization representatives in a strategic planning process which supports the development and maintenance of a State Chronic Disease Prevention and Health Plan. This plan will be directly linked to the Agency's State Health Improvement Plan.
- works with the members of the BCHCDP's Management Team to ensure the State Chronic Disease Prevention and Health Plan clearly defines elements related to data collection, surveillance, epidemiology and evaluation; health equity and disparity elimination, as well as, coordinated media-health communication strategies.
- works with the members of the BCHCDP's Management Team to ensure the training needs of assigned staff (bureau and regional) are clearly identified, and that each employee's Employee Annual Performance and Development Plan (EPDP) contains workforce development strategies that will help enhance their ability to support the development of healthy communities by addressing chronic health conditions and associated health risk factors using evidence-based intervention.
- works with the members of the BCHCDP's Management Team to identify and address the specific performance measures of the Federal - Prevention and public Health Funds Coordinated Chronic Disease Prevention and Health Promotion Program, and ensure the timely submission of associated reports and renewal applications/work-plans

South Carolina

**Tobacco Prevention
and HEAL Coverage**



Eat Smart, Move More Chapters and Members



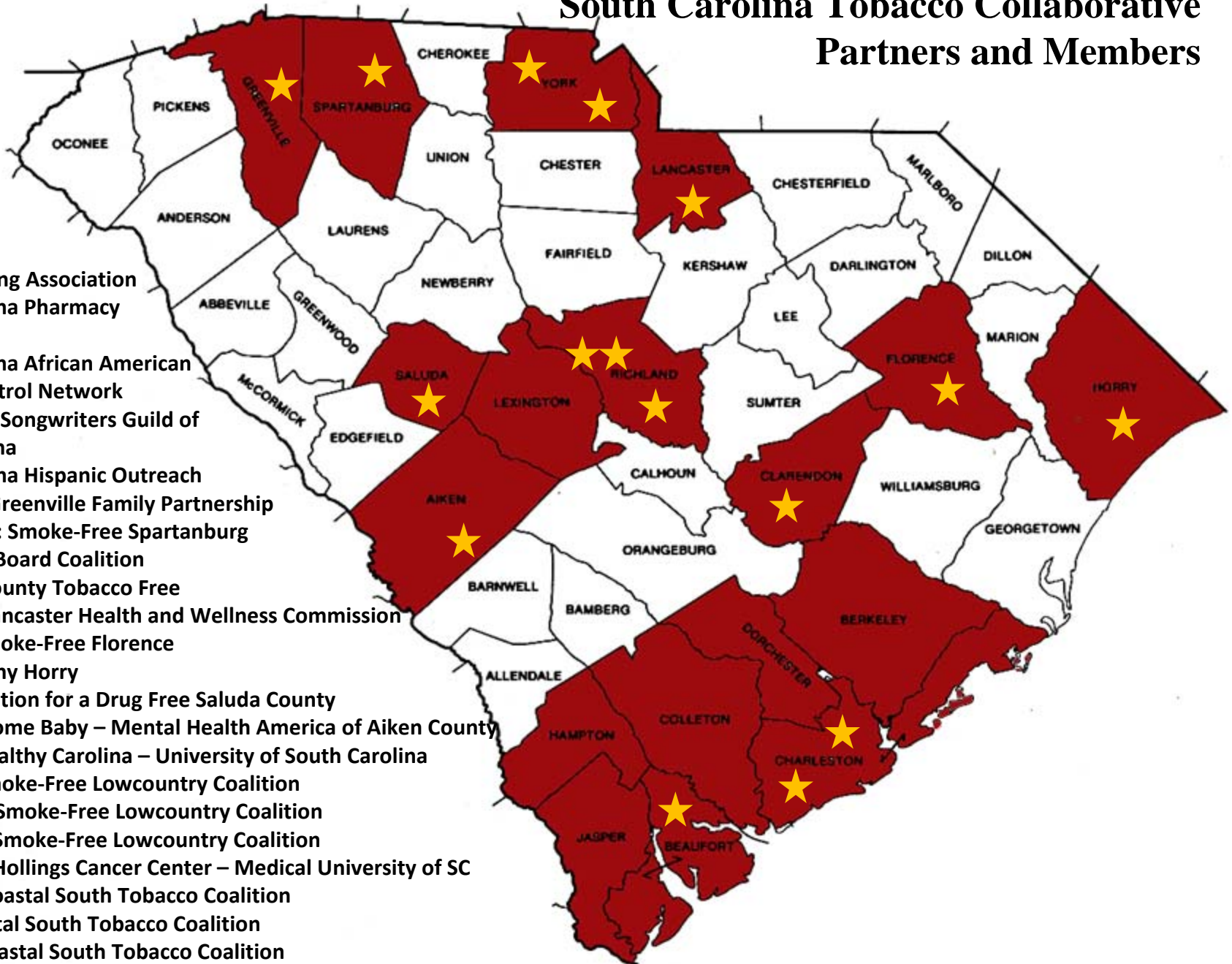
Eat Smart Move More Chapter

- Charleston
- Berkeley
- Dorchester
- Beaufort
- Jasper
- Allendale
- Hampton
- Orangeburg
- Lexington
- Richland
- York
- Florence
- Kershaw

Other Healthy Eating / Active Living Members

- Sumter: Sumter County Active Lifestyles
- Fairfield
- Greenville: Live Well Greenville
- Spartanburg: Partners for Active Living
Hub City
Children's Obesity Taskforce

South Carolina Tobacco Collaborative Partners and Members



- American Lung Association
- South Carolina Pharmacy Association
- South Carolina African American Tobacco Control Network
- Musicians & Songwriters Guild of South Carolina
- South Carolina Hispanic Outreach
- Greenville: Greenville Family Partnership
- Spartanburg: Smoke-Free Spartanburg
- York: All on Board Coalition
York County Tobacco Free
- Lancaster: Lancaster Health and Wellness Commission
- Florence: Smoke-Free Florence
- Horry: Healthy Horry
- Saluda: Coalition for a Drug Free Saluda County
- Aiken: Welcome Baby – Mental Health America of Aiken County
- Richland: Healthy Carolina – University of South Carolina
- Berkeley: Smoke-Free Lowcountry Coalition
- Dorchester: Smoke-Free Lowcountry Coalition
- Charleston: Smoke-Free Lowcountry Coalition
Hollings Cancer Center – Medical University of SC
- Hampton: Coastal South Tobacco Coalition
- Jasper: Coastal South Tobacco Coalition
- Beaufort: Coastal South Tobacco Coalition

South Carolina Coverage for Tobacco, HEAL and OQUIN Providers

